

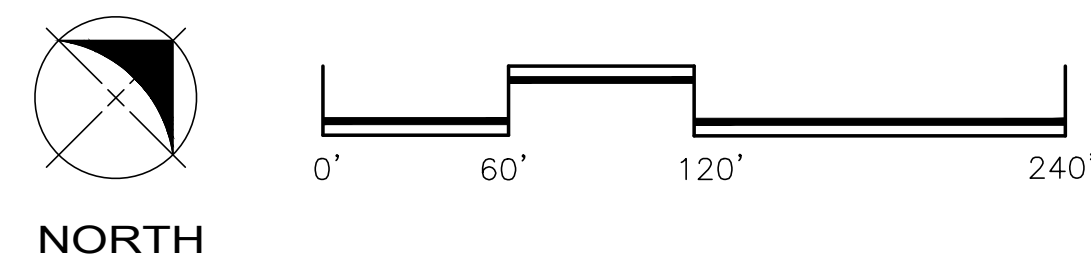
SITE AND BUILDING DATA

■ **SITE AREA**
 - MAIN PARCEL ± 908,564 S.F. ± 20.857 ACRES

■ BUILDING AREA		AREA (±)	DIMENSIONS
1A	HOBBY LOBBY	55,006 S.F.	240.25' x 223.50'
1B	AVAILABLE	12,000 S.F.	96.00' x 125.00'
1C	AVAILABLE	12,500 S.F.	100.00' x 125.00'
1D	AVAILABLE	12,000 S.F.	96.00' x 125.00'
2A	AVAILABLE	40,003 S.F.	201.00' x 194.41'
2B	NORTHERN TOOL	22,020 S.F.	120.00' x 182.00'
2C-1	AVAILABLE	3,200 S.F.	40.00' x 80.00'
2C-2	AVAILABLE	1,600 S.F.	20.00' x 80.00'
2C-3	AVAILABLE	1,479 S.F.	20.00' x 80.00'
2D	AVAILABLE	8,000 S.F.	120.00' x 66.66'
2E	AVAILABLE	7,200 S.F.	120.00' x 60.00'
2F	AVAILABLE	2,200 S.F.	61.50' x 35.00'
2G	AVAILABLE	2,975 S.F.	85.00' x 35.00'
3B	AVAILABLE	6,000 S.F.	75.00' x 80.00'
3C	AVAILABLE	3,600 S.F.	60.00' x 60.00'
HOTEL		60,000 S.F.	152.00' x 69.00'
TOTAL BUILDING AREA		249,783 S.F.	

PARKING SPACES	PARKING RATIO
RETAIL: 672 SPACES	3.78/ 1,000 S.F.
RESTAURANT: 101 SPACES	8.56/ 1,000 S.F.
OVERALL: 773 SPACES	4.07/ 1,000 S.F. (EXCLUDING HOTEL)

Salem Gate
Market



	TRI - LAND PROPERTIES, INC. DEVELOPMENT - MANAGEMENT - LEASING
	PRELIMINARY SITE PLAN - SP-4.16
SALEM GATE MARKET CONYERS, GEORGIA	APRIL 16, 2019 (800) 441-7032